

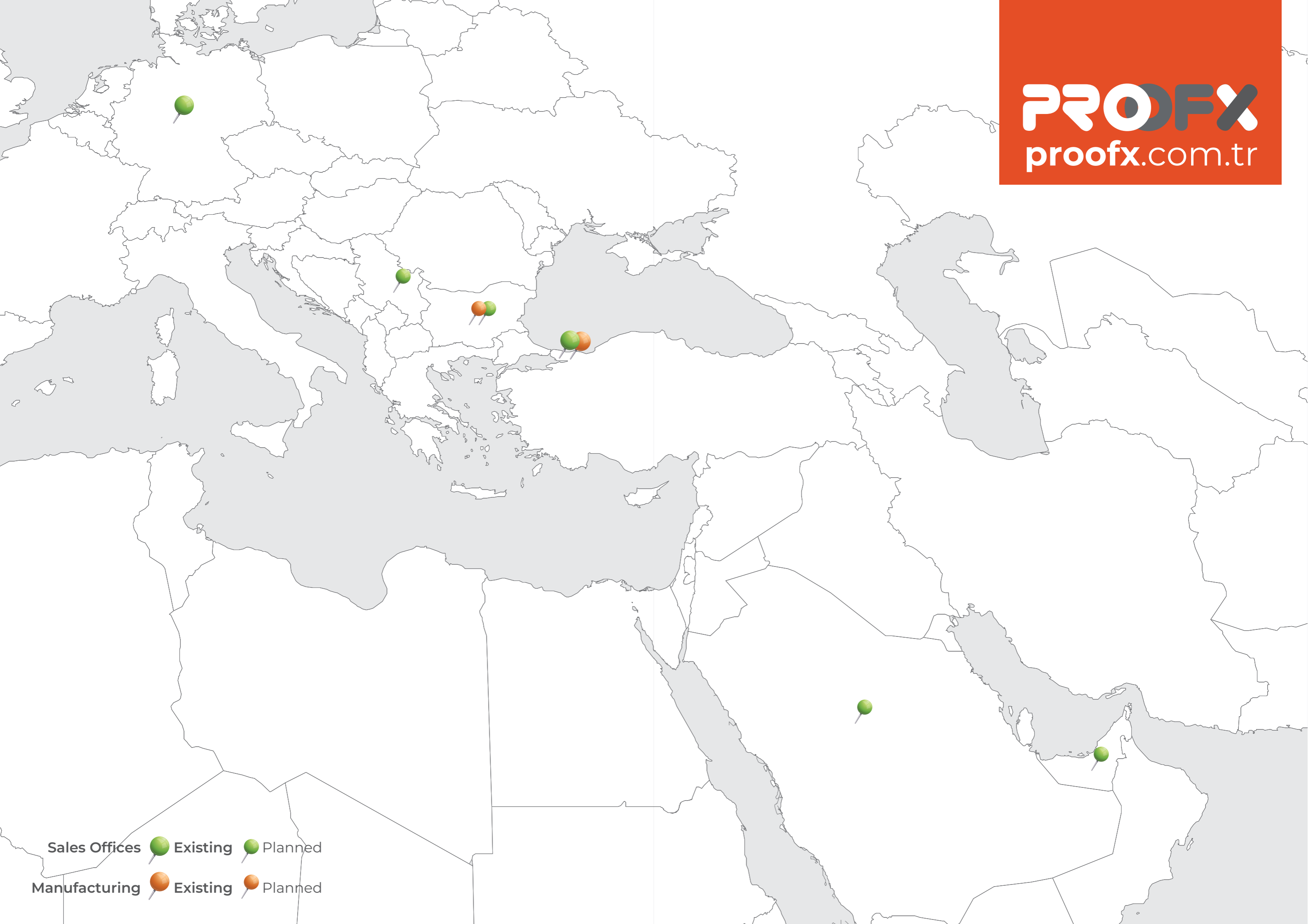
proofx.com.tr

*Shaping
a Green
Future*

PRODFX

SOLAR MODULE MOUNTING SYSTEMS





Sales Offices  Existing  Planned

Manufacturing  Existing  Planned



PROOFX

*Shaping
a Green Future*

Proofx Fastener Technologies was founded in Istanbul in 2010 and provides services that are truly focused on the needs and expectations of its customers, using solutions that have been developed for the solar energy sector. With its own patented products, **Proofx** is a company that provides systems developed by its own engineering teams at its R&D center in Istanbul and its factory in Kocaeli to Turkey and other countries. The company specializes in solar energy systems, lifelines, roof and facade fasteners, and fastener technologies.

Why Proofx ?

Following technology advancements closely, **Proofx** develops systems to provide its customers and partners with the latest, most innovative, and most reliable solutions accessible. As one of the leading companies that has encouraged innovation to maintain its strongest competitive edge, **Proofx** operates accordingly.

Since its establishment, **Proofx** has grown to become one of the leading sectors in the field of solar energy according to its projects and references. Reliable and accepted in every region where it succeeds, **Proofx**'s mission is to provide solutions and, using the technology it has created through experience, products that allow individuals and companies to achieve their goals.

Proofx, aims to create sustainable technologies through a transparent, innovative, reliable, efficient, and customer-oriented approach. Our commitment to the environment, society, and continuous development drives us to deliver customer satisfaction and lasting solutions.


Since its foundation, Proofx has emerged as a leading industry player in the solar energy sector, backed by successful projects and strong references.

SHAPING A GREEN FUTURE



Advanced and innovative technologies are used in the field of fasteners, supported by over 15 years of experience in fasteners and roofing systems. Operating both nationally and internationally, systems are developed to meet these specific needs.

Tailored Solar Module Mounting Systems for All Types of Roofs

PRO**FILE**



ProoFlat *East - West*

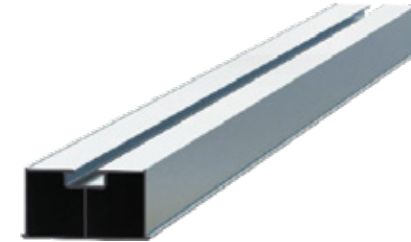
Flat Roof Mounting System



- Mounting from Both Short and Long Sides of Solar Panels
- Weight-based Fastening without Piercing the Roof
- Applicability with Prooftech
- A2-70 Stainless Steel Fasteners

ProoFlat *East - West*

System Components



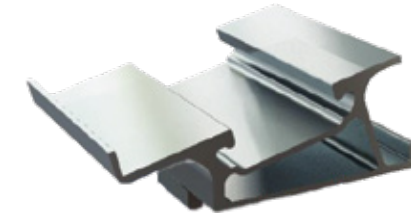
ProoFlat Rail

- 1300-5200 mm Length
- EN AW 6063 T66 Aluminum
- Installation with T-Head Bolt and Flanged Nut
- High Strength
- Easy Installation



ProoFlat Back

- Optimized Design for Solar Panel Connection on Both Short and Long Sides
- Installation with ProofCross Kit
- Compatible with MC4/Cable Clip



ProoFlat Front

- Optimized Design for Solar Panel Connection on Both Short and Long Sides
- Installation with ProofCross Kit



ProoFlat Base

- High Strength
- High Resistance to UV and External Effects
- Easy Installation



ProofClamp Mini Set

- High-Strength Solar Panel Clamp
- Set includes A2-70 Stainless Steel Bolt and Spring
- Compatible with 30-42 mm Panel Frames
- Easy Installation

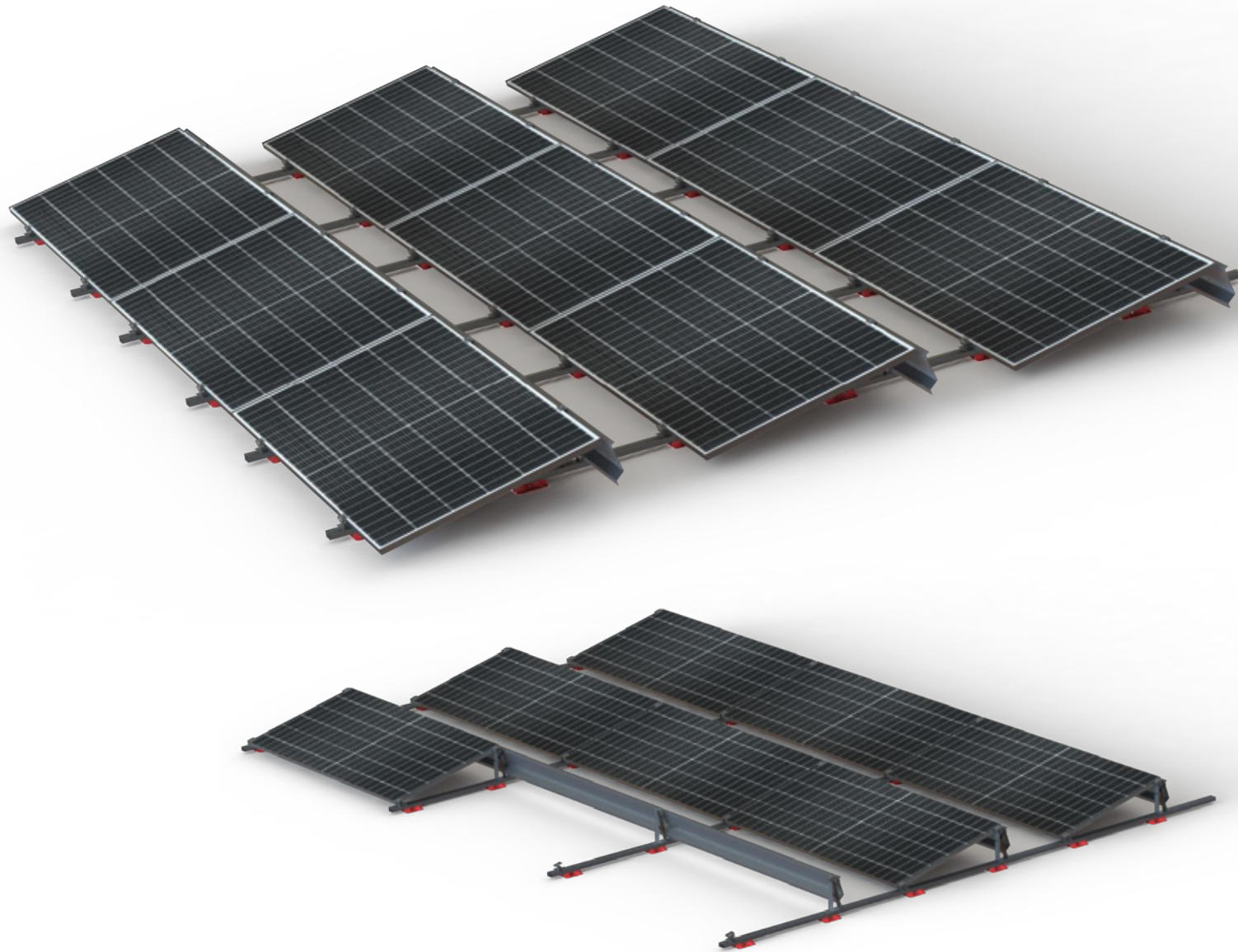


ProofCross Kit

- EN AW 6063 T66 Aluminum
- Installation with T-Head Bolt and Flanged Nut

ProoFlat*South*

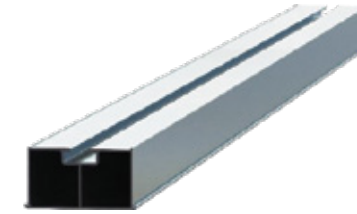
Flat Roof Mounting System



- Mounting from Both Short and Long Sides of Solar Panels
- Weight-based Fastening without Piercing the Roof
- Applicability with Prooftech
- A2-70 Stainless Steel Fasteners

ProoFlat*South*

System Components



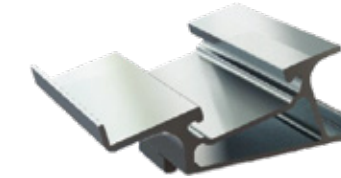
ProoFlat Rail

- 1300-5200 mm Length
- EN AW 6063 T66 Aluminum
- Installation with T-Head Bolt and Flanged Nut
- High Strength
- Easy Installation



ProoFlat Back

- Optimized Design for Solar Panel Connection on Both Short and Long Sides
- Installation with ProofCross Kit
- Compatible with MC4/Cable Clip



ProoFlat Front

- Optimized Design for Solar Panel Connection on Both Short and Long Sides
- Installation with ProofCross Kit



ProoFlat Base

- High Strength
- High Resistance to UV and External Effects
- Easy Installation



ProofClamp Mini Set

- High-Strength Solar Panel Clamp
- Set includes A2-70 Stainless Steel Bolt and Spring
- Compatible with 30-42 mm Panel Frames
- Easy Installation



ProofCross Kit

- EN AW 6063 T66 Aluminum
- Installation with T-Head Bolt and Flanged Nut



ProoFlat Wind Deflector

- Installation with Self Drilling Screws
- Special Design for Better Aerodynamic
- Various length options
- Compatible with ProoFlat Back

ProofTile PROFILE Long Rail

Tile Roof Mounting System



- High Strength
- Easy Installation
- A2-70 Stainless Steel Fasteners

ProofTile PROFILE Long Rail

System Components



ProofTile Long Rail

- 43 - 58 - 83 mm Height
- 290 - 6000 mm Length
- EN AW 6063 T66 Aluminum
- High Strength
- Easy Installation



ProofClamp Mid & ProofClamp End Set

- High-Strength Solar Panel Clamp
- Set includes A2-70 Stainless Steel Bolt and Spring
- Compatible with 30-42 mm Panel Frames
- Easy Installation



ProofTile Hook Kit

- Compatible with most tile types
- Mountability to different purlin types with different types of screws
- Easy Installation



Connector

- EN AW 6063 T66 Aluminum
- Connection Profile for Continuity of Rails

Prooftech PROFILE Long Rail

Membrane Roof Mounting System



- High Strength
- Lamination between Membrane and Base Plate
- 100% Sealing Warranty
- Connection to the Roof with ETA Certified Products
- A2-70 Stainless Steel Fasteners

Prooftech PROFILE Long Rail

System Components



Profile Long Rail

- 43 - 58 - 83 mm Height
- 290 - 6000 mm Length
- EN AW 6063 T66 Aluminum
- High Strength
- Easy Installation



ProofClamp Mid & ProofClamp End Set

- High-Strength Solar Panel Clamp
- Set includes A2-70 Stainless Steel Bolt and Spring
- Compatible with 30-42 mm Panel Frames
- Easy Installation



Prooftech

- Lamination between Membrane and Base Plate
- 100% Sealing Warranty
- Connection to the Roof with ETA Certified Products



Profile SBA

- Adjustable Connection System
- Installation with T-Head Bolt and Flanged Nut



Connector

- EN AW 6063 T66 Aluminum
- Connection Profile for Continuity of Rails

ProofCross PROFILE Long Rail

Purlin Connected Mounting System



- High Strength
- Easy Installation
- A2-70 Stainless Steel Fasteners

ProofCross PROFILE Long Rail

System Components



Profile Long Rail

- 43 - 58 - 83 mm Height
- 290 - 6000 mm Length
- EN AW 6063 T66 Aluminum
- High Strength
- Easy Installation



ProofClamp Mid & ProofClamp End Set

- High-Strength Solar Panel Clamp
- Set includes A2-70 Stainless Steel Bolt and Spring
- Compatible with 30-42 mm Panel Frames
- Easy Installation



Stud Bolt

- Stud Bolt for Concrete, Steel or Wooden Purlin
- Sealing Warranty
- Various Length Options



Profile SBA

- Adjustable Connection System
- Installation with T-Head Bolt and Flanged Nut



ProofCross Kit

- EN AW 6063 T66 Aluminum
- Installation with T-Head Bolt and Flanged Nut

ProofClip PROFILE Long Rail

Standing Seam Roof Mounting System



- High Strength
- Installation without Drilling the Roof using ProofClip Kit
- A2-70 Stainless Steel Fasteners

ProofClip PROFILE Long Rail

System Components



Profile Long Rail

- 43 - 58 - 83 mm Height
- 290 - 6000 mm Length
- EN AW 6063 T66 Aluminum
- High Strength
- Easy Installation



ProofClamp Mid & ProofClamp End Set

- High-Strength Solar Panel Clamp
- Set includes A2-70 Stainless Steel Bolt and Spring
- Compatible with 30-42 mm Panel Frames
- Easy Installation



ProofClip Kit

- Compatible with Different Standing Seam Types
- High-Strength Standing Seam Roof Mounting Kit
- Installation with Compression Method
- M10, A2-70 Stainless Bolts



Profile SBA

- Adjustable Connection System
- Installation with T-Head Bolt and Flanged Nut



Connector

- EN AW 6063 T66 Aluminum
- Connection Profile for Continuity of Rails

ProofUp PROFILE Long Rail

Trapezoidal and Sandwich Roof
Crest-Top Connected
Mounting System



- High Strength
- Fastening with Self-Drilling Screw or Rivet
- EPDM Insulation
- A2-70 Stainless Steel Fasteners

ProofUp PROFILE Long Rail

System Components



Profile Long Rail

- 43 - 58 - 83 mm Height
- 290 - 6000 mm Length
- EN AW 6063 T66 Aluminum
- High Strength
- Easy Installation



ProofClamp Mid & ProofClamp End Set

- High-Strength Solar Panel Clamp
- Set includes A2-70 Stainless Steel Bolt and Spring
- Compatible with 30-42 mm Panel Frames
- Easy Installation



ProofUp

- Crest-Top Connection Kit
- Sealing with EPDM Rubber
- EN AW 6063 T66 Aluminum
- Installation with T-Head Bolt and Flanged Nut



Self-Drilling Screw with Seal

- Sealing Warranty
- Easy Installation



Rivet

- Sealing Warranty
- High Strength

ProofSide PROFILE Long Rail

Trapezoidal and Sandwich Roof
Crest-Side Connected
Mounting System



- High Strength
- Easy Installation
- Fastening with Self-Drilling Screw or Rivet
- EPDM Insulation
- A2-70 Stainless Steel Fasteners

ProofSide PROFILE Long Rail

System Components



ProofSide Long Rail

- 43 - 58 - 83 mm Height
- 290 - 6000 mm Length
- EN AW 6063 T66 Aluminum
- High Strength
- Easy Installation



ProofClamp Mid Set

- High-Strength Solar Panel Clamp
- Set includes A2-70 Stainless Steel Bolt and Spring
- Compatible with 30-42 mm Panel Frames
- Easy Installation



ProofClamp End Set

- High-Strength Solar Panel Clamp
- Set includes A2-70 Stainless Steel Bolt and Spring
- Compatible with 30-42 mm Panel Frames
- Easy Installation



ProofSide

- Crest-Side Connection Kit
- Sealing with EPDM Rubber
- Stainless Steel



Self-Drilling Screw with Seal

- Sealing Warranty
- Easy Installation



Rivet

- Sealing Warranty
- High Strength

PROFILE *Mini Rail*

Trapezoidal and Sandwich Roof Mounting System



- Horizontal Layout
- High Strength
- Easy Installation
- Fastening with Self-Drilling Screw or Rivet
- EPDM Insulation
- A2-70 Stainless Steel Fasteners

PROFILE *Mini Rail*

System Components



Profile Mini Rail

- 25 mm Height
- 105 mm or Custom Length
- EN AW 6063 T66 Aluminum
- Sealing with EPDM Rubber



ProofClamp Mini Mid

- High-Strength Solar Panel Clamp
- Set includes A2-70 Stainless Steel Bolt and Spring
- Compatible with 30-42 mm Panel Frames
- Easy Installation



ProofClamp Mini End

- High-Strength Solar Panel Clamp
- Set includes A2-70 Stainless Steel Bolt and Spring
- Compatible with 30-42 mm Panel Frames
- Easy Installation



Self-Drilling Screw with Seal

- Sealing Warranty
- Easy Installation



Rivet

- Sealing Warranty
- High Strength

PROFILE *Short Rail*

Trapezoidal and Sandwich Roof Mounting System



- High Air Circulation
- High Strength
- Easy Installation
- Fastening with Self-Drilling Screw or Rivet
- EPDM Insulation
- A2-70 Stainless Steel Fasteners

PROFILE *Short Rail*

System Components



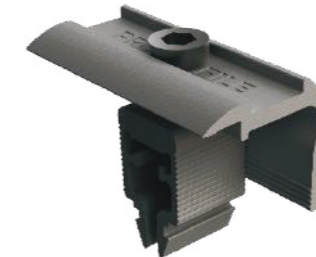
Profile Short Rail

- 20 - 50 - 80 mm Height
- 290 - 375 - 540 mm Length
- EN AW 6063 T66 Aluminum
- Sealing with EPDM Rubber
- High Strength



ProofClamp Mid Set

- High-Strength Solar Panel Clamp
- Set includes A2-70 Stainless Steel Bolt and Spring
- Compatible with 30-42 mm Panel Frames
- Easy Installation



ProofClamp End Set

- High-Strength Solar Panel Clamp
- Set includes A2-70 Stainless Steel Bolt and Spring
- Compatible with 30-42 mm Panel Frames
- Easy Installation



Self-Drilling Screw with Seal

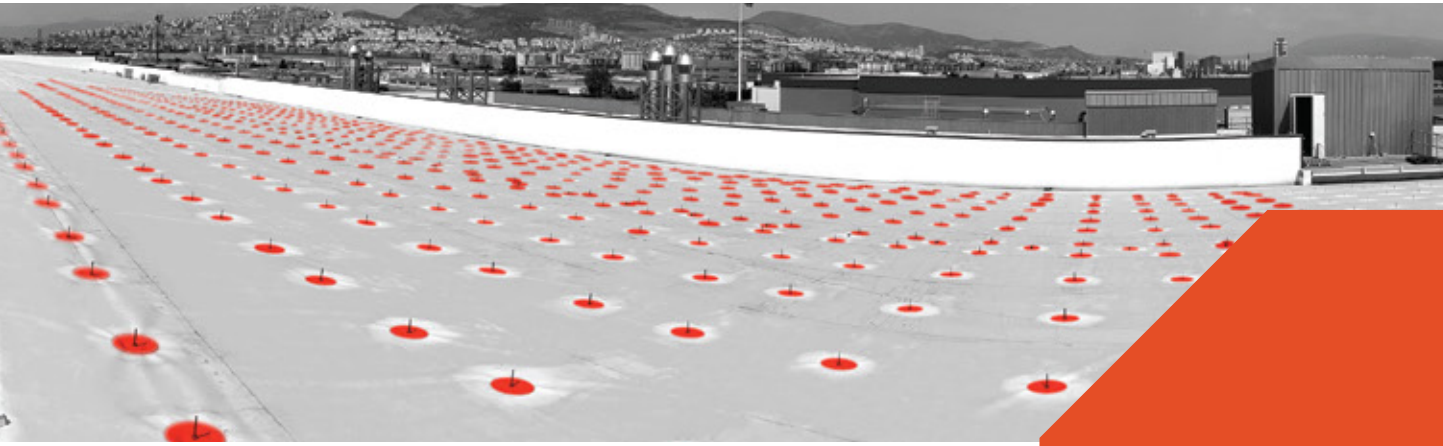
- Sealing Warranty
- Easy Installation



Rivet

- Sealing Warranty
- High Strength

The solution you need!



- Prooftech is a solar connection adapter used to fix solar panels compatible with TPO, PVC, EPDM, and bituminous membranes to roofs covered with membranes.

- The upper part is made of corrosion-resistant stainless steel, while the lower plate consists of electrostatic powder-coated carbon steel.

- Prooftech solar connection adapter can also be used for pipe supports, step transitions, electrical pans, satellite antennas, HVAC applications, and similar assemblies.

- It is compatible with TPO, PVC, EPDM, bituminous membranes, and Shingle.

Suitable for all types of membrane roofs

PROOFTECH

- Prooftech effectively distributes excessive loads across the roof, safeguarding the structural integrity of the building. It prevents concentrated stress points that could compromise the building's framework.

- It prevents deformation of the heat insulation layer by distributing loads across the bottom plate, thereby spreading the force evenly to the heat insulation materials such as stone wool and besmen.

- By using the same type of membrane as the existing roof covering, it ensures a secure and reliable seal.

PROOFTECH *MX*



	Membrane Diameter	Plate Diameter	Bolt Diameter	Disk Diameter
Prooftech-MX	340 mm	200 mm	M10	40 mm

Materials

- TPO PVC and EPDM Alternative
- Stainless steel 304 quality studbolt
 - Static painted bottom plate
- Suitable for all types of profiles
- Connection with 6 pcs screws

Application Area

- Solar Panel Infrastructure Anchor
- Pipe Support and step transitions
 - HVAC connections

Infrastructure Types

- Trapezoidal Sheet
- Aerated Concrete
- Concrete

PROOFTECH *MD*



	Membrane Diameter	Plate Diameter	Bolt Diameter	Disk Diameter
Prooftech-MD	260 mm	120 mm	M10	25 mm

Materials

- TPO PVC and EPDM Alternative
- Stainless steel 304 quality studbolt
 - Static painted bottom plate
- Suitable for all types of profiles
- Connection with 4 pcs screws

Application Area

- Solar Panel Infrastructure Anchor
- Pipe Support and step transitions
 - HVAC connections

Infrastructure Types

- Trapezoidal Sheet
- Aerated Concrete
- Concrete

PROOFTECH_{TV}



	Membrane Diameter	Palte Diameter	Bolt Diameter	Disk Diameter
Prooftech-TV	260 mm	120 mm	M10	30 mm

Materials

- TPO PVC and EPDM Alternative
- Stainless steel 304 quality studbolt
 - Static painted bottom plate
- Suitable for all types of profiles
- Direct connection with a single screw

Application Area

- Solar Panel Infrastructure Anchor
- Pipe Support and step transitions
 - HVAC connections

Infrastructure Types

- Trapezoidal Sheet
- Aerated Concrete
 - Concrete
- Structural Steel

PROOFTECH_{KT}



	Membrane Diameter	Plate Diameter	Profile Size	Profile Length
Prooftech-KT	260 mm	120 mm	30x30 mm	100 mm
	260 mm	120 mm	30x30 mm	300 mm
	260 mm	120 mm	30x30 mm	500 mm

Materials

- TPO PVC and EPDM Alternative
- Stainless steel 304 quality studbolt
 - Static painted bottom plate
- Suitable for all types of profiles
- Direct connection with a single screw

Application Area

- Solar Panel Infrastructure Anchor
- Pipe Support and step transitions
 - HVAC connections

Infrastructure Types

- Trapezoidal Sheet
- Aerated Concrete
 - Concrete
- Structural Steel

Our References



beko

LC Waikiki

NOVARTIS



NETLOG
LOJİSTİK

ermas
MADENCİLİK TUR. SAN. VE TİCARET A.Ş.
Kuruluş 1988

BİM

Haier

schattdecor

KUEHNE+NAGEL



RZK ÇELİK
RZK ÇELİK SERVIS MERKEZİ SAN. VE TİC. A.Ş.

kimpur
KİMTEKS POLİÜRETAN



FiLE

RECORDATI



arvato

DOĞUŞ OTOMOTİV
AUDI

COŞKUNÖZ
METAL FORM

avrupa

AkzoNobel

bareks



MAHLE



BriSA

APPRIVA
SOURCING & MANUFACTURING

ESBAŞ
EGE SERBEST BÖLGE KURUCU VE İŞLETİCİSİ A.Ş.
AEGEAN FREE ZONE DEVELOPMENT & OPERATING CO.

TT tayra tekstil

Kalibre Alüminyum

Eczacıbaşı

Petrol Ofisi

IPEKYOL



FIRATBORU



tadım

TEMSA

FERRO
DÖKÜM

ATES
WIND POWER

kipa AVM

cesur

Leana



PROFX

Tailored Anchoring Systems for Membrane Roofing

*All previous versions of the Product Information Form will be deemed obsolete. The data provided in this Product Information Sheet is compatible with current information and has been published in good faith. Proofx Fastening Technologies LLC is not responsible for the accuracy and quality of the fastening to be made if the recommended usage method and installation instructions specified in the sheet are not followed.



Tested at ITU (Istanbul Technical University)

proofx.com.tr    

Head Quarter

Fetih Mah Tahrali Sok Kavakyeli Is Merkezi
D Blok K 3 D 6 / 7 Atasehir - Istanbul - Turkey

+90 216 533 49 79

info@proofx.com.tr

Manufacturing

Kocaeli - Turkey